

# Welcome to HSBC Digital Business Services

Here's your guide to Sheffield, prepared for you, by our current Digital Business Services Graduates.



"Welcome to Sheffield! As you embark on your journey with HSBC in this vibrant city, we've curated a comprehensive guide to help you settle in, explore, and make the most of your experience."



# Contents:

---

1. Getting Started
2. Essential Services and Support
3. Lifestyle and Entertainment
4. The Great Outdoors and Beyond The City
5. Welcome to Grosvenor House
6. Additional Tips



# Getting Started

---



## *Housing*

There is a large variety of private housing in the city centre, ranging from £600 to £1000+. More affordable areas to live include Crooks, Broomhill and Sharrow. There is a big student population in Sheffield with some areas containing a lot of rental properties. The main area for this is Crooks, which is about a 40-minute walk from the office.

Ecclesall Road, commonly referred to as Eccy Road in Sharrow has lots of great places to eat and shop and is only 20 minutes from the office. Kelham Island is an up-and-coming area, located in the north of the city. It has lots of new bars and eateries opening regularly. Kelham is connected by the tram network, with Cathedral being the closest stop to the office, just a five-minute walk away. Kelham is a slightly more expensive area and isn't great for those with cars due to a lack of parking to keep that in mind when looking at areas to live.

Most contracts in Sheffield are 12 months - Our tip would be to try negotiate for a break clause if you don't see yourself living there long term.

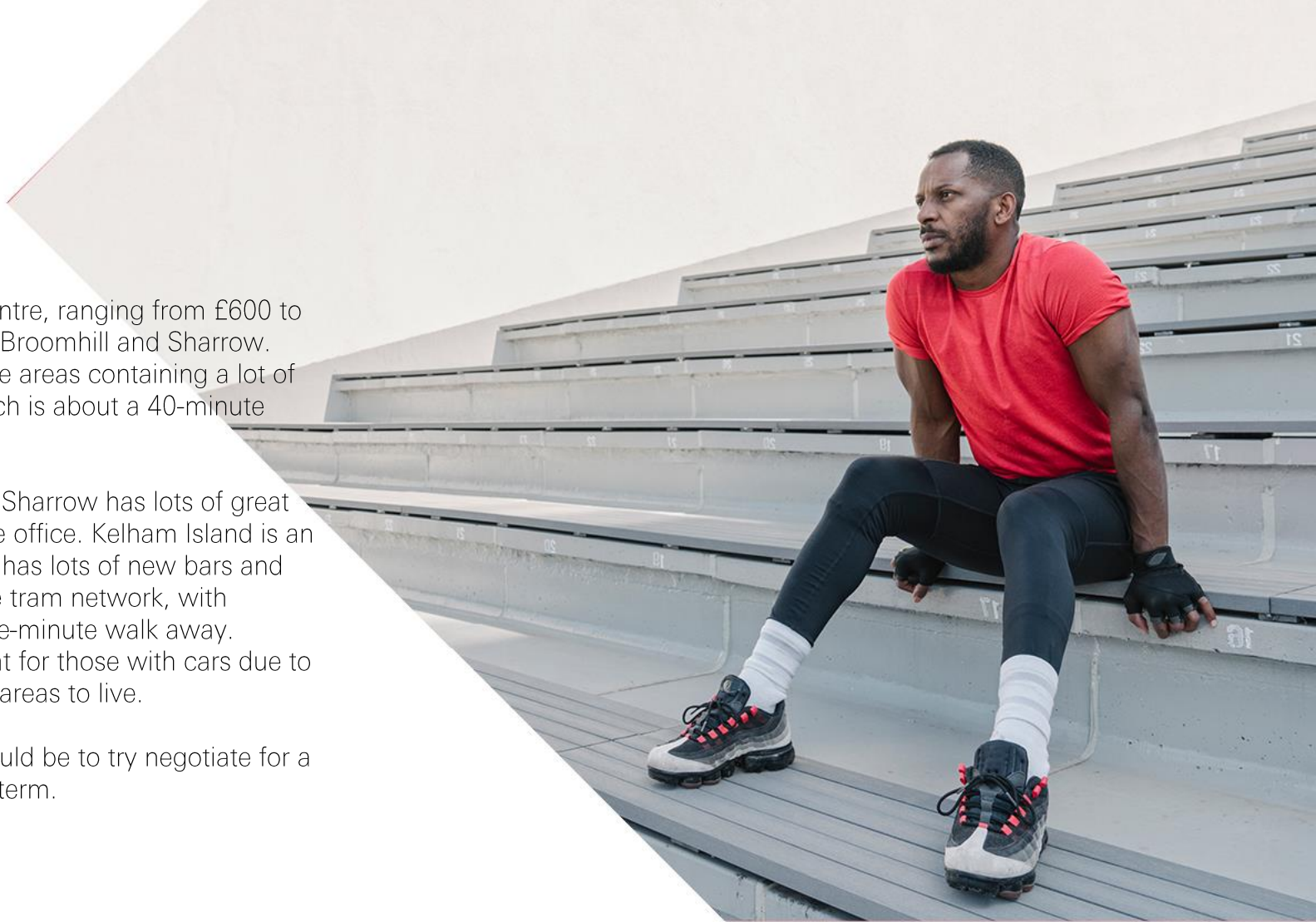


## *Transportation*

The buses in Sheffield are mainly owned by First and Stagecoach, both will take contactless payments with some First buses having a 'tap on and tap off' system. Sheffield also has a tramline network owned by Stagecoach.

Taxi services in the city include Uber, City Taxis and Veezu. Sheffield is very hilly so there's lots of walks with a steep incline!

For information about travel in South Yorkshire visit [Travel South Yorkshire](#)



## Utilities

Your utilities will be dependent on where you decide to live and the landlord that you have. Some properties are all inclusive, however there are a number that will require manual setup by you, the tenant so be sure to check this when finding a property.



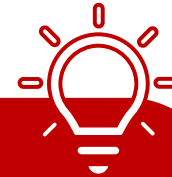
### Council Tax

As you are no longer a student, you are now liable for council tax. You need to register for council tax and the amounts can be found on the [Sheffield City Council Website](#).



### Water

There is only one water provider in Sheffield - [Yorkshire Water](#). They have two main plans, fixed and pay as you go. Typically, you have to wait for your first bill before you can setup your account. We recommend reaching out to your landlord in the first instance to get guidance on this. You can expect to pay roughly £15 - £30 pppm.



### Electricity

Like water bills, you will have to wait for a letter from the electric company serving the property before you can setup an account. Once setup though, you can opt to switch to any of the major providers available in the UK. At the time of writing this guide, Octopus Energy have some of the best rates. Consider looking at [Uswitch](#) when choosing a new electricity provider.



### Wi-Fi

There are many internet providers available in Sheffield, however not all have a fibre link, keep this in mind whilst searching for housing. The main fibre providers are Virgin Media, Hyperoptic, Pinemedia and Sky. If you happen to move to a property with limited internet speeds there are also 5G hubs available from phone providers like EE, Vodafone and Three. The average cost is roughly £30.



# Essential Services & Support

---



## *Healthcare*

There are two main hospitals in Sheffield, Royal Hallamshire and Northern General. There is also an NHS Walk-in clinic in the city centre. Private healthcare is included in your HSBC benefits and is provided by BUPA. Download and register with the eMed app for online appointments.



## *Banking*

Sheffield has HSBC, NatWest, Lloyds, Nationwide, Co-Op, Halifax, Coventry Building, Virgin Money and Metro banks inside the city centre so there are plenty of options to choose from.



## *Emergency Contacts*

For all emergencies 999 is the national contact, 101 is for non-emergency police assistance and 111 for non-emergency NHS healthcare. HSBC also has an emergency line for staff - **XXX INCLUDE XXX**



## *Support Services*

If you need any mental wellbeing support, there are multiple resources across Sheffield that can help. We have linked a few below.

[Sheffield Mental Health Guide](#)

[Sheffield Mind](#)

[Sheffield Support Hub](#)

[Community Support Workers | Sheffield City Council](#)



# Lifestyle & Entertainment

Sheffield is an up-and-coming city with lots going on, no matter the season. There are new restaurants opening regularly and lots of activities to do. Following some of the city's Instagram pages can help you keep up to date on events across the city. Here are a few that we find helpful: @visitsheffield and @indpndntshf.



## Dining

There are lots of great food options available in Sheffield - some of our favourites include: Cutlery Works, Kommune and Sheffield Plate which are all great food-halls. Husk, Hygge, 200degrees and Marmadukes are all great coffee stops for caffeine lovers or if you're more on a Bubble-tea fan then we recommend Jiangtea.

If you fancy Italian, Domo, Rudys Pizza and Napoli Centro are our recommendations. Burrito Y Mas is another favourite of ours and there is always Joro is you fancy a bit of fine dining!



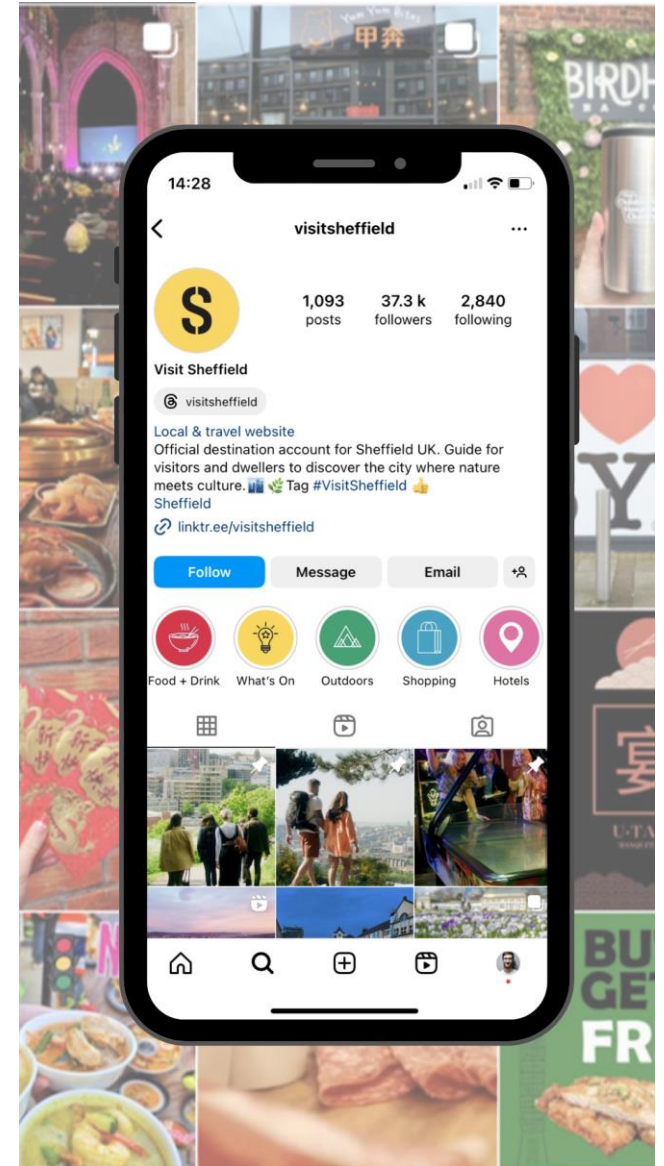
Sheffield Plate



Kommune Food-hall



Burrito Y Mas







## Nightlife and Activities

No matter what you're interested in there is plenty to do, from bouldering and park runs to music festivals and cat cafes – there is something for everyone! We've included here, some of our favourite activities and events in the city.

There are lots of great places for a night out in the City. Kelham Island, West Street, Ecclesall Road and Division Street are all popular nightlife areas in Sheffield.

You can read more about nightlife in Sheffield here: [Nightlife in Sheffield \(welcometosheffield.co.uk\)](https://welcometosheffield.co.uk)



- Tramlines Music Festival
- Sheffield Doc Fest
- Sheffield United - Premier League Football Club
- Parkrun at Endcliffe Park
- The Hangar & Depot Climbing - Bouldering
- Meadowhall Shopping Centre
- Lane 7, Tenpin and Hollywood Bowl - Bowling
- Cineworld, The Light & Odeon Luxe - Cinemas
- The Treehouse - Board game café
- Tabby Teas - Cat café
- Cicada Circus Arts - Aerial classes
- Golf Fang and Gloryholes - Mini golf
- Ice Sheffield - Ice skating
- Pop Up Painting & Fired Up – Painting and Pottery
- Patriot Games Boom Battle Bar - Pub games
- Ponds Forge - Swimming and private court hire
- Mayfield Alpaca Animal Park
- National Video Game Museum



“There are so many places opening all the time. If you like bars and eateries, make sure to take a trip to Kelham Island and Sharrow, and if you like shopping you can't beat Meadowhall.”



# The Great Outdoors & Beyond The City



*Peak District*



Whilst the city centre has enough to keep you busy, Sheffield is situated in a great spot for exploring further afield. You can easily do day-trips to nearby cities like Leeds, Manchester and York. If you enjoy the outdoors, we recommend spending some time exploring the Peak District which is on our doorstep, as well as Rother Valley Country Park, Lake District, Mar Tor, Rivelin Valley Walk and Kinder Scout.

“It sounds cliché, but the Peak District really is on your doorstep!”



Try exploring some of the parks in Sheffield, we have Crookes Valley Park, Weston Park, Bolehills and Endcliffe Park, where you can get involved in the park run every Saturday at 9am [Endcliffe parkrun](#).

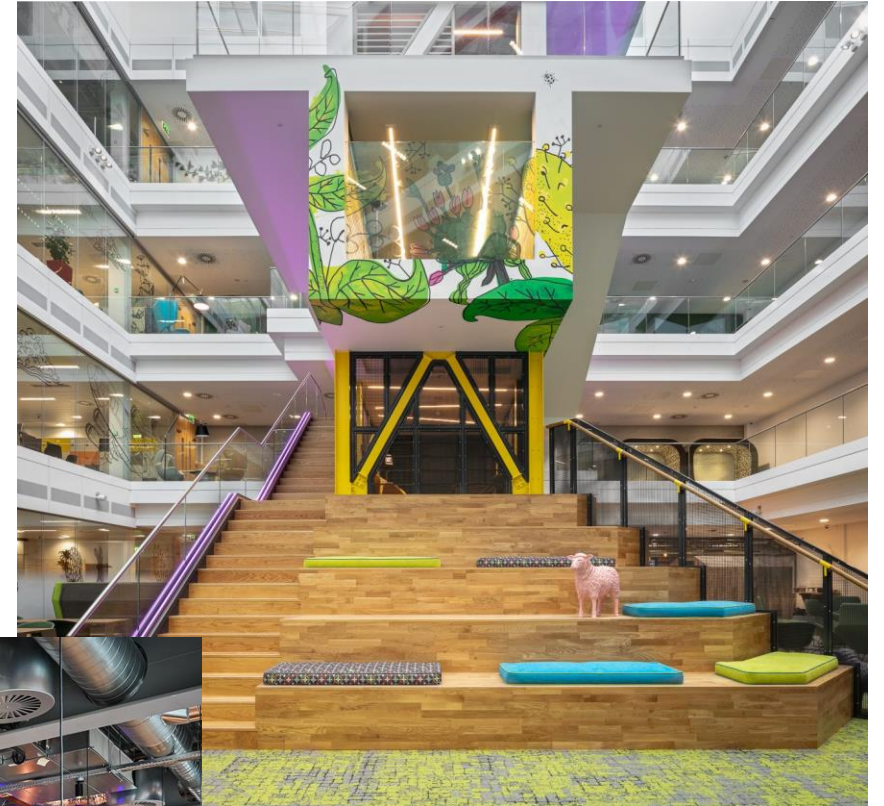


# Welcome to Grosvenor House

---

You'll be based at Grosvenor House 1 Wellington St, Sheffield City Centre, Sheffield S1 4HP - a fantastic office location in the centre of Sheffield, complete with many agile working spaces, an onsite gym and rooftop terrace, the office offers more than just a desk to sit at.

Each floor of Grosvenor House has a different theme – see if you can work out what all the themes are when you join!



“The building is in the heart of Sheffield, so let’s put the heart of Sheffield in the building.”



# Additional Tips

---



Whilst beautiful Sheffield gets its fair share of typical Northern weather! We do get lots of sunshine, but we also get our fair share of rain and Sheffield can be a very windy city - Invest in a good raincoat as umbrellas tend to get blown away! Sheffield also gets a fair amount of snow too which is further exacerbated by its hills.

Certain areas of Sheffield are prone to flooding when rainfall gets heavy, you can view the cities flood risk map here [Strategic flood risk assessment | Sheffield City Council](#).

If you need any further support or guidance, please reach out to the recruitment team at [sheffield.recruitment@hsbc.com](mailto:sheffield.recruitment@hsbc.com)

